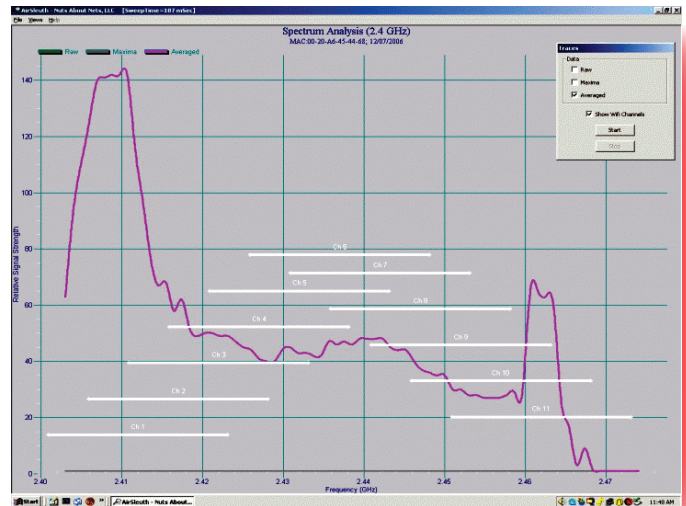
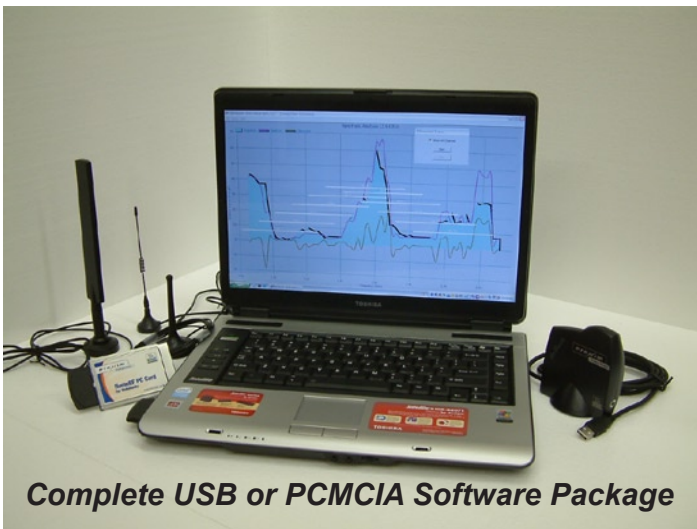


# Wireless Network *Mysteries* Solved!

## - AirSleuth Pro -

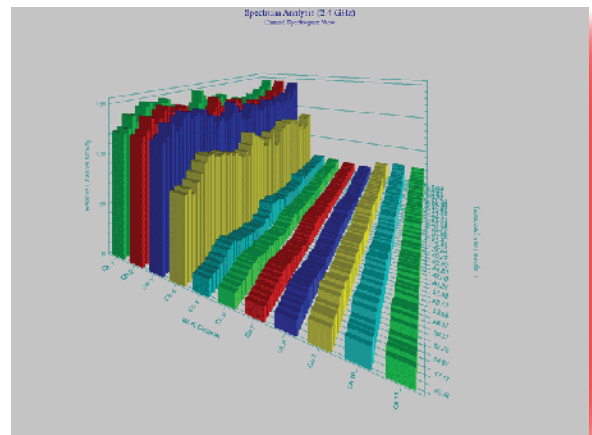
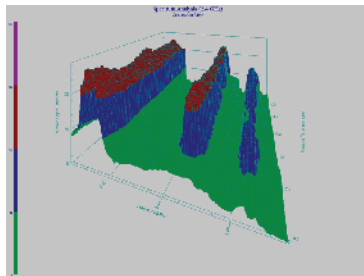
Why rely on "blind faith" when it comes to the set-up and performance of your wireless networks?

- Speed WLAN Throughput
- Locate Wi-Fi Dead Spots
- Identify Wi-Fi Interference
- Eliminate Channel Congestion
- Optimize Antenna Placement



### 10 Powerful Diagnostic Modes

- Traces
- Pie Chart
- Spectrogram
- Sorted Channel
- RSS Timecourse
- Differential Traces
- Selected Channels
- Differential Channel
- Channel Timecourse
- Channel Spectrogram

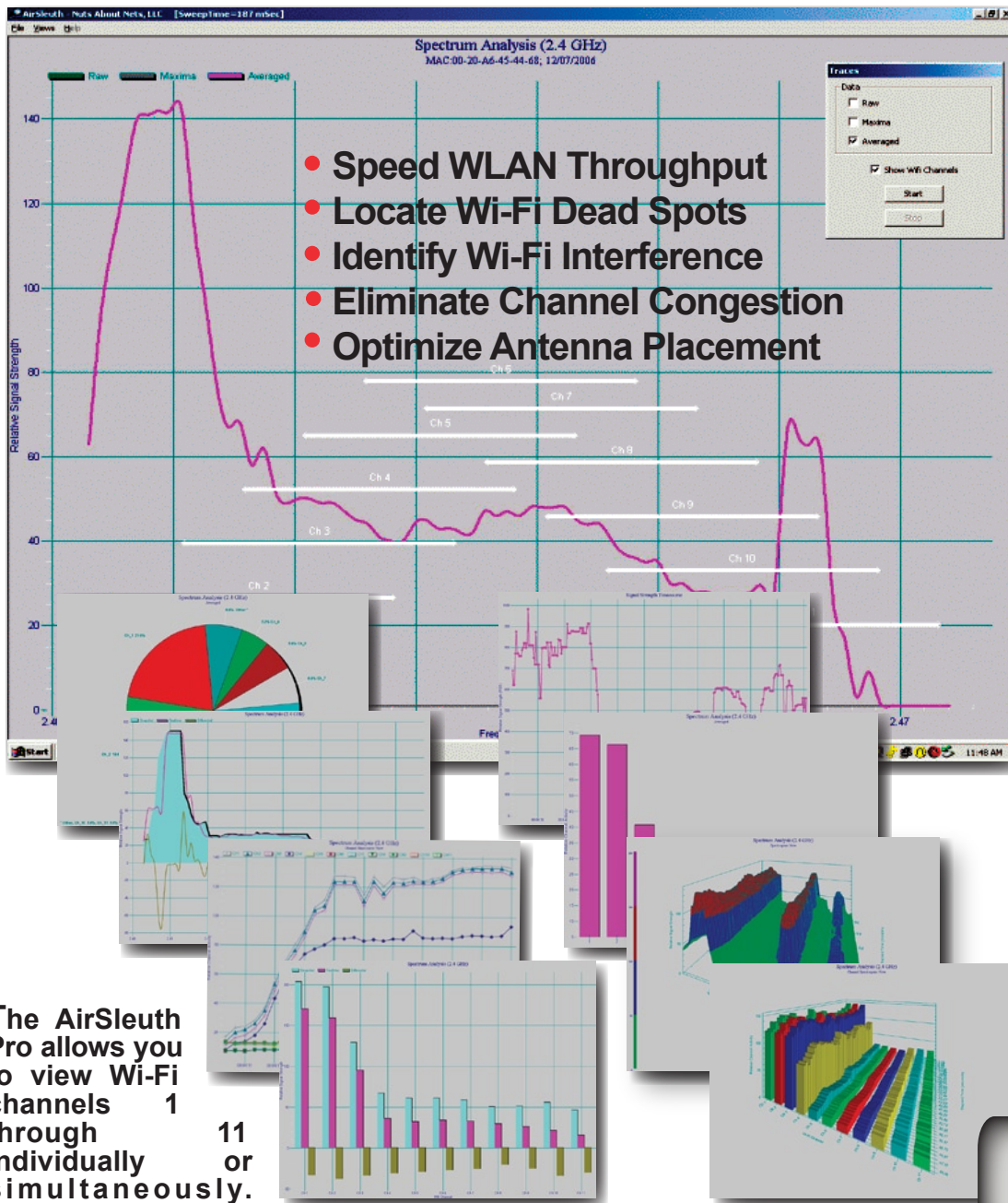


PLUS - Best Wi-Fi Channel Calculation, Data Recording & Playback, and Snapshot Printing

**- AirSleuth Pro -**  
Eliminate the Mystery & Guesswork  
with Kaltman Creations' Affordable RF Solutions!

**Eliminate the Mystery & Guesswork  
with Kaltman Creations' Affordable RF Solutions!**

# - AirSleuth Pro -



- Speed WLAN Throughput
- Locate Wi-Fi Dead Spots
- Identify Wi-Fi Interference
- Eliminate Channel Congestion
- Optimize Antenna Placement

The AirSleuth 2.4 GHz Spectrum Analyzer is a robust, yet easy-to-use, diagnostic tool that provides mobile, site-survey information. The data is collected in real-time and is displayed in a variety of different views. This information is used to determine whether other devices are interfering with your wireless network (WLAN) - and, if so, AirSleuth computes the best Wi-Fi (802.11 standard) channel to use for your access point (AP). Selecting a different Wi-Fi channel that isn't being clobbered by other wireless devices will dramatically improve the performance of your wireless network (WLAN).

The AirSleuth Pro allows you to view Wi-Fi channels 1 through 11 individually or simultaneously. There are Peak, Average, and Raw trace modes which all clearly display the activity within the individual 11 Wi-Fi channels.

**Incredibly Affordable!**  
Visit [www.RFAnalyzer.net](http://www.RFAnalyzer.net)  
for pricing.

**Why rely on "blind faith" when it comes to the set-up and performance of your wireless networks?**

### System Requirements

Windows 98, 2000, XP, Vista - USB or PCMCIA Type II Ports - CPU and memory requirements are modest, AirSleuth runs fine on older laptops and desktop computers and does not require Windows.Net

Another Innovative product from the "First to Market" people at

**Kaltman Creations**

"First to Market" Solutions

[www.rfanalyzer.net](http://www.rfanalyzer.net)  
678-714-2000